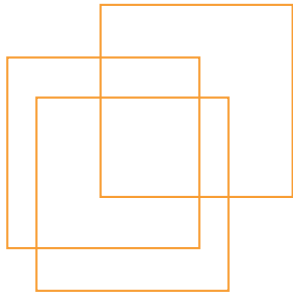



International
Labour
Organization

EUROPE AND CENTRAL ASIA



2017 Report - Multinational Enterprises, Development and Decent Work: the promotion and application of the Tripartite Declaration of Principles concerning Multinational Enterprises and Social Policy (MNE Declaration) in Europe and Central Asia


MNE DECLARATION



The ILO MNE Declaration recognizes the important role of MNEs in social and economic development and decent work for all. It seeks to **encourage their positive contribution** and **minimize and resolve potential negative impacts**.



The principles in this tripartite-agreed global instrument offer **guidelines to MNEs, governments, and employers' and workers' organisations** in the areas of employment, training, conditions of work and life, and industrial relations.



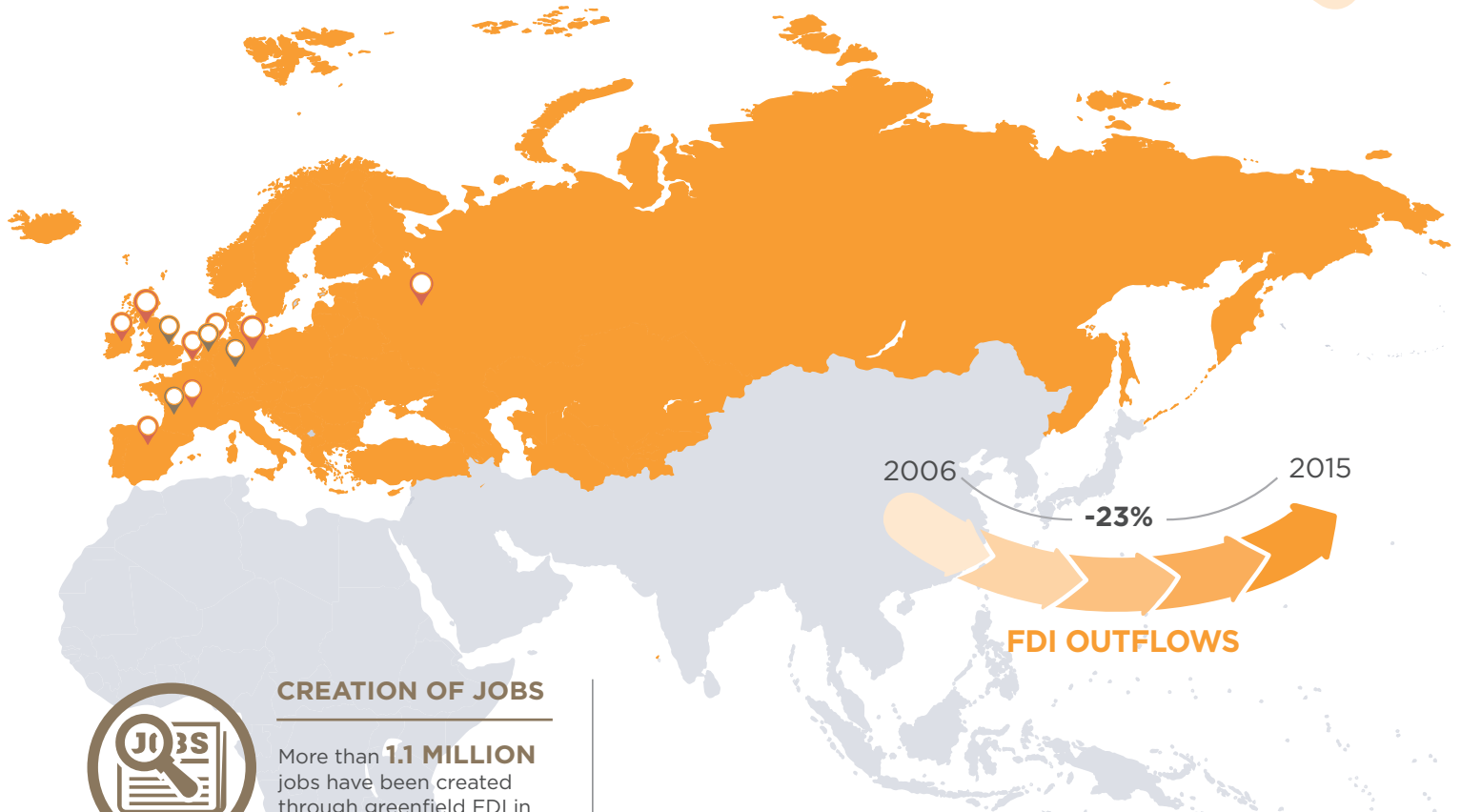
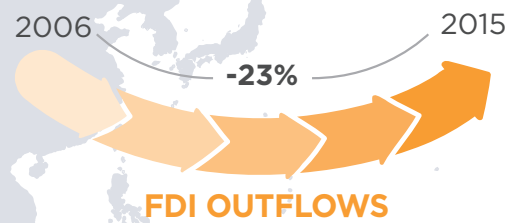
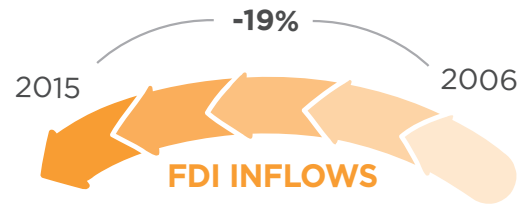
As part of the regional follow-up mechanism to the MNE Declaration, a **QUESTIONNAIRE** was sent to governments and employers' and workers' organizations in the region. It requested them to provide information on the way in which they have **PROMOTED AND APPLIED THE PRINCIPLES** of the MNE Declaration at the country level. The report synthesizes their responses to the questionnaire and provides an overview of FDI and decent work in the region.

AT A GLANCE: FDI AND DECENT WORK IN THE REGION

59 of the world's **TOP 100 NON-FINANCIAL MNEs** are located in the region

 **Highest recipients of FDI**

 **Highest FDI investors**



CREATION OF JOBS

More than **1.1 MILLION** jobs have been created through greenfield FDI in the region in the past two years



DECENT WORK DEFICITS

Inequality, unemployment, non-standard forms of employment, informality, among others, **REMAIN PREVALENT**



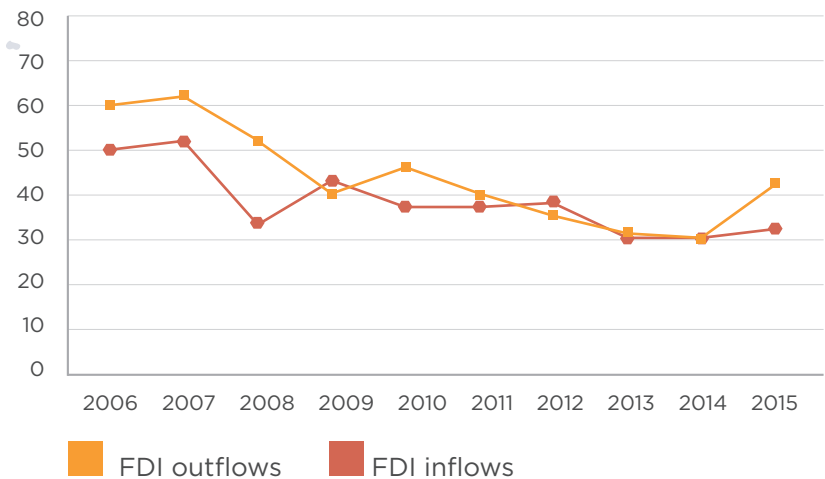
POLICIES AND FRAMEWORKS

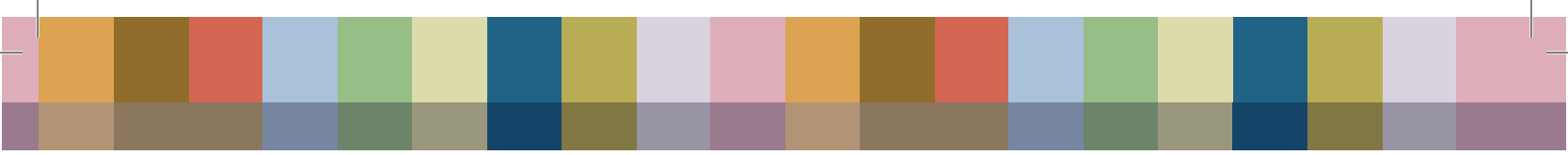
Some initiatives taken in the region promote **CORPORATE SOCIAL RESPONSIBILITY** and **SUSTAINABILITY REPORTING** through policies, legislation and international agreements

The region is actively engaged in global supply chains: trade represents **79%** of GDP

FDI from China to the European Union increased by **77%** in 2016

REGION'S SHARE OF WORLD FLOWS (%)





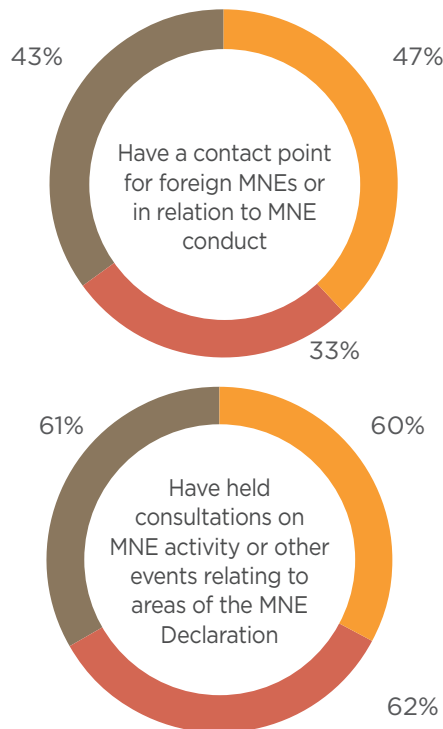
Albania			
Armenia	■	■	
Austria	■		
Azerbaijan	■		
Belarus		■	
Belgium	■		■
Bosnia and Herzegovina	■	■	■
Bulgaria	■		■
Croatia	■	■	■
Cyprus		■	
Denmark	■		
Estonia	■		
Finland	■		
France	■		■
Georgia		■	
Germany	■	■	■
Greece	■		
Hungary	■		
Iceland			■
Ireland			■
Israel			■
Italy	■		■
Kazakhstan	■	■	■
Kyrgyzstan	■	■	■
Latvia			
Lithuania	■		
Luxembourg			
Malta	■		
Montenegro	■	■	■
Norway	■	■	■
Poland	■		■
Portugal	■	■	■
Romania			
San Marino			
Serbia	■	■	■
Slovakia		■	
Slovenia			
Spain			■
Sweden	■		■
Switzerland	■	■	■
Tajikistan	■	■	■
The Czech Republic	■		
The former Yugoslav Republic of Macedonia	■	■	
The Netherlands	■		
The Republic of Moldova		■	■
The Russian Federation			■
The United Kingdom			
Turkey	■	■	■
Turkmenistan			
Ukraine	■	■	■
Uzbekistan		■	

VIEWS FROM GOVERNMENTS, EMPLOYERS AND WORKERS FROM THE REGION, BASED ON INPUTS DIRECTLY RECEIVED FROM:

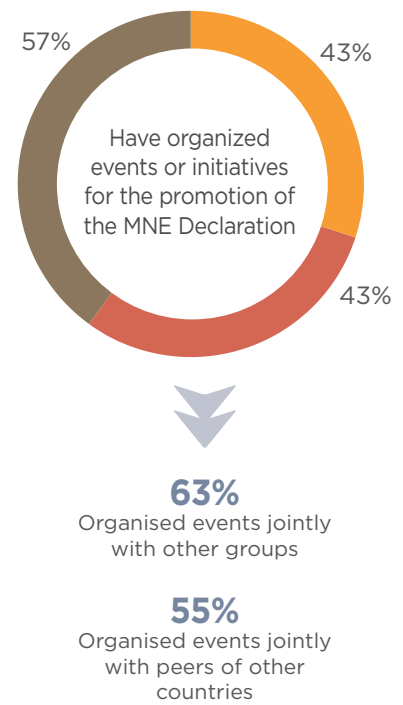


33 governments
22 employers' organizations
29 workers' organizations

DIALOGUE AND CONSULTATION WITH MNEs AND/OR ON THEIR ACTIVITIES



PROMOTION OF THE MNE DECLARATION AT COUNTRY LEVEL



AREAS OF THE MNE DECLARATION CONSIDERED AS RELEVANT FOR EACH GROUP





MAIN RECOMMENDATIONS OF GOVERNMENTS, EMPLOYERS' AND WORKERS' ORGANIZATIONS TO ENHANCE THE IMPACT OF THE MNE DECLARATION IN THE REGION

- **Implement appropriate regulatory and policy frameworks to effectively advance the application of the principles of the MNE Declaration**
- **Strengthen the collaboration of actors at the national and international level on the topic of MNEs and decent work**
- **Conduct further research on the activities of MNEs**
- **Further promote the MNE Declaration in the region**



FURTHER RESOURCES

MNE Declaration
www.ilo.org/mnedeclaration

Multinational Enterprises and Enterprise
Engagement Unit
www.ilo.org/multi

ILO Helpdesk for Business on International
Labour Standards
www.ilo.org/business

Use this code to access
the 2017 report:

